



Grand Hotel  
Kempinski

RIGA

THE HOTEL  
WHERE HISTORY  
WAS MADE

*Kempinski*

HOTELIERS SINCE 1897

# Authentic European luxury in the heart of Riga

Nestled in the heart of Riga's Old Town, Grand Hotel Kempinski Riga is a delightful hotel that will take you back to Latvia's remarkable history, main tourist attractions and medieval past with all its magnificent sights.



## Facilities & Services

### ROOMS AND SUITES

- Total of 141 rooms
- 30 Superior Rooms
- 40 Deluxe Rooms
- 30 Opera Deluxe Rooms
- 15 Junior Suites
- 20 Deluxe Suites
- 5 Diplomatic Suites
- 1 Presidential Suite

### GUESTROOM FACILITIES

- Complimentary WiFi
- Interactive TV
- In-room safe
- Private bar
- Separate shower and bathtub
- Individual climate control and air conditioning

### HOTEL SERVICES

- Concierge services
- 24-hour room service
- 24-hour in-room dining
- Complimentary WiFi
- Car and limousine rental service
- Laundry & dry cleaning service

### WELLNESS AND ACTIVITIES

- Kempinski The Spa
- Indoor swimming pool
- Fitness centre
- Sauna
- Rasul mud room
- Bio sauna
- Relaxation lounge
- Massages & body treatments
- Spa boutique
- Plunge pool
- Aroma steam room
- Heat bathing rooms

### MEETINGS & EVENTS

- Total meeting area: 587 sq m
- Grand Ballroom (340 sq m) with foyer
- VIP Room (8th floor)
- 5 meeting rooms, all with natural daylight
- Technical equipment at your disposal

### RESTAURANTS AND BARS

- Amber restaurant (1st floor)
- Grand Bar (1st floor)
- Lobby Lounge & Cigar Lounge (1st floor)
- Stage 22 (Rooftop Restaurant & Bar, 8th floor)
- Berthold Deli (Pastry Shop, 1st floor)

### DIRECTIONS

- Airport - 10 km
- Ferry Port - 2.2 km
- Train Station - 1.3 km
- Bus Station - 1.2 km

### GENERAL INFORMATION

- Currency: Euro (EUR)
- Climate: humid continental with warm summers
- Taxes are included

### PLACES OF INTEREST

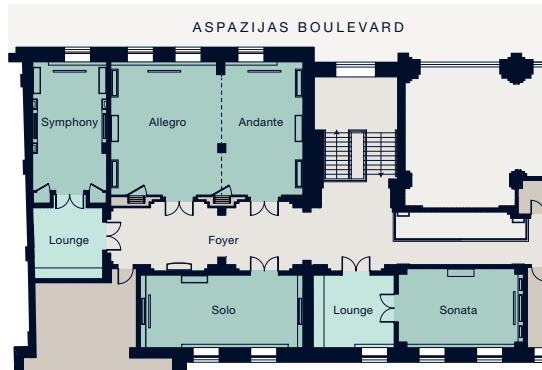
- Riga Old Town - UNESCO World Heritage site with the world's richest collection of Art Nouveau
- Dome Cathedral - 650 m
- St. Peter's Church - 1.4 km
- House of the Blackheads - 1.3 km
- National Opera - 40 m
- Art Nouveau District - 1.6 km
- Arena Riga - 4.5 km
- Latvian Ethnographic Open Air Museum - 12 km
- Jurmala city - 20 km
- Sigulda castle and park - 52 km
- Rundale Palace - 80 km

# Meetings & Events Plan

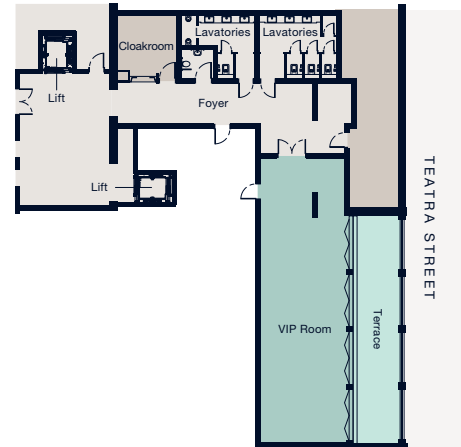


0 5 10 m

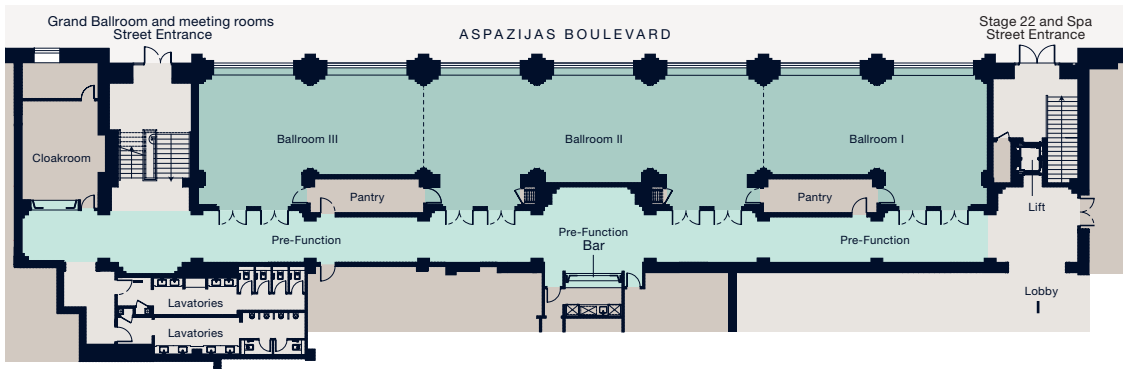
## 2ND FLOOR MEETING ROOMS



## 8TH FLOOR VIP ROOM

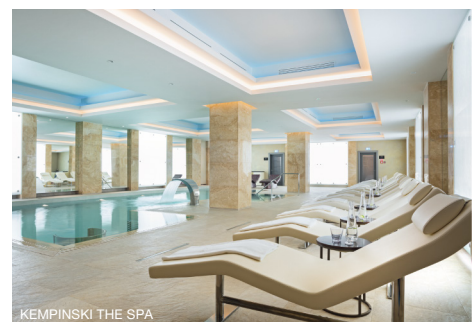
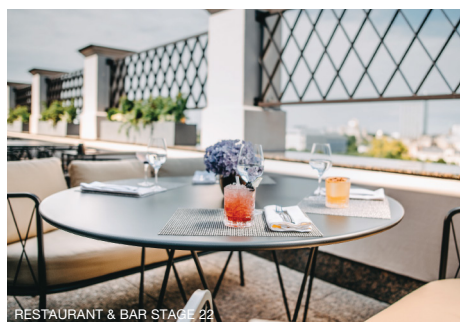


## 1ST FLOOR GRAND BALLROOM



ROOM	FLOOR AREA in sq m	LENGTH in m	WIDTH in m	RECEPTION 	DINING 	THEATRE 	CLASSROOM 	U-SHAPE 	BOARDROOM 
Grand Ballroom	340	48.5	7.5	360	200	310	180	120	138
Ballroom I	104	13.9	7.5	110	50	80	36	32	30
Ballroom II	158	21	7.5	150	70	130	60	56	54
Ballroom I + II	262	35	7.5	260	120	220	120	98	96
Ballroom III	104	13.8	7.5	110	50	80	36	32	30
Ballroom II + III	262	34.9	7.5	260	120	220	120	98	96
Sonata*	35 (+20*)	7.4	4.7	30	20	36	16	14	14
Solo	43	9.8	4.4	25	24	36	20	18	16
Andante	38	8.1	4.7	20	20	32	20	14	14
Allegro	54	8.1	6.6	40	30	45	24	20	14
Andante + Allegro	92	11.3	8.1	60	50	70	36	26	20
Symphony*	34 (+20*)	7.6	4.5	-	-	-	-	-	12
VIP Room	94	17.3	5.4	60	50	60	40	35	32

\*The venues Sonata and Symphony both have a 20 sq m lounge in addition to their proper meeting spaces.



# Contact Us

For an easy and efficient booking experience, book directly with Kempinski, via [kempinski.com](http://kempinski.com), through the Kempinski mobile app, or your preferred travel professional, and benefit from the best rates and service.



## GRAND HOTEL KEMPINSKI RIGA

Aspazijas blvd. 22  
Riga, LV-1050,  
Latvia

T +371 6767 1111  
[reservations.riga@kempinski.com](mailto:reservations.riga@kempinski.com)  
[kempinski.com/riga](http://kempinski.com/riga)

GPS Long: E 24° 6' 44''  
GPS Lat: N 56° 56' 58''